

## Toggle Clamps

Steel / Stainless Steel, Operating Lever with T-Handle

### SPECIFICATION

#### Types

- Type **M**: Without lock mechanism, with two flanged washers
- Type **MC**: Without lock mechanism, with two flanged washers and clamping screw GN 708.1
- Type **ML**: With lock mechanism, with two flanged washers
- Type **MLC**: With lock mechanism, with two flanged washers and clamping screw GN 708.1

#### Tensioning mechanism

- Steel **ST**
  - Sheet metal parts
  - Case-hardened steel C10, zinc plated, blue passivated
  - Bearing pins tempered
  - Bearing rivets case-hardened
  - Moving parts lubricated with special grease
- Stainless steel **NI**
  - Sheet metal parts AISI 304
  - Bearing pins, bearing rivets AISI 304
  - Moving parts lubricated with special grease

#### Handle

Plastic  
Red, oil resistant



#### Flanged washers GN 898

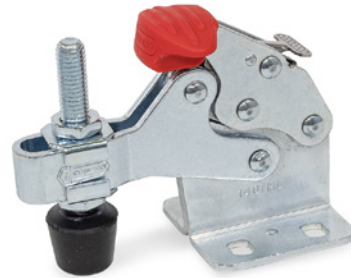
- Steel, zinc plated, blue passivated for ST
- Stainless steel AISI 304 for NI

#### Clamping screws GN 708.1 for type MC / MLC

- Steel, zinc plated, blue passivated for ST
- Stainless steel AISI 304 for NI
- Rubber tip
  - 85 Shore A
  - Type A (flat pressure area)

### INFORMATION

Toggle clamps GN 820.6 feature a very compact design. Types ML / MLC are securely locked while in the clamped position to prevent loosening by accident or due to vibrations. The lock can be released by one hand operation.

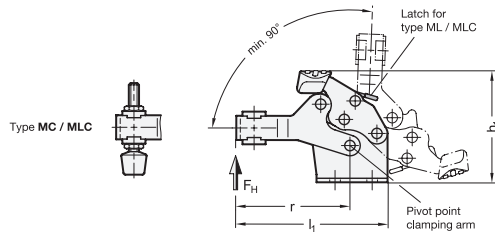


### ACCESSORY

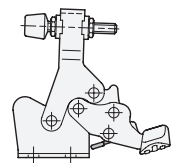
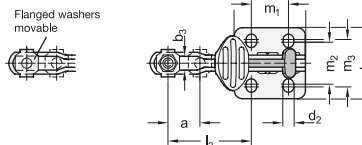
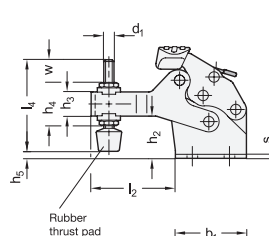
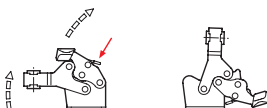
- GN 801.1 Clamping Arm Extenders (Rigid) (see page )
- GN 801.2 Clamping Arm Extenders (with Joint) (see page )

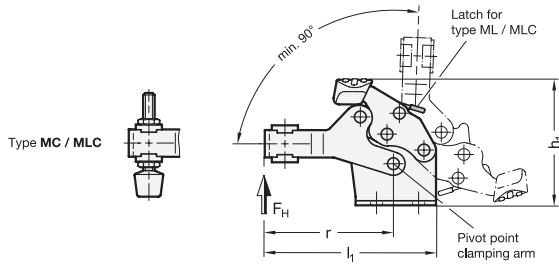
### TECHNICAL INFORMATION

- General Information for Toggle Clamps (see page 1560)
- Stainless Steel Characteristics (see page A26)

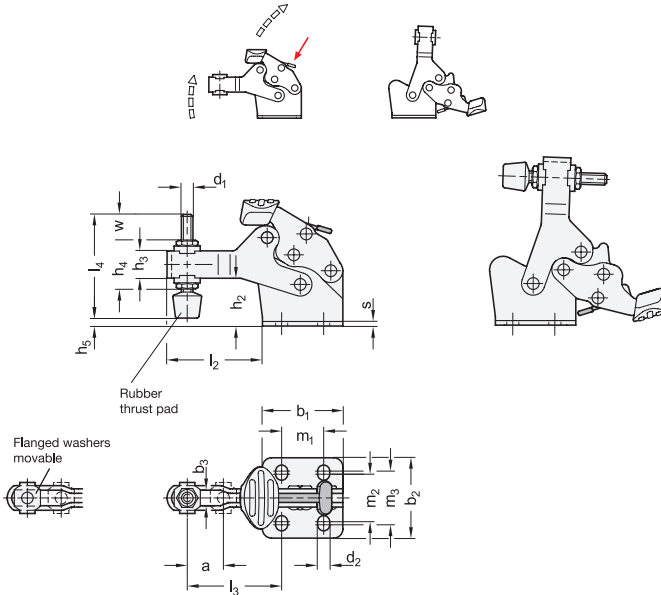


Operating principle





Operating principle



GN 820.6-ST

Description	Size	F <sub>H</sub> in N	a ≈	b1	b2	b3	d1	d2	h1 ≈	h2	h3	h4 ≈	h5 ≈	l1 ≈	l2	l3 ≈	l4	m1	m2	m3	r	s	w ≈ Adjustable range	⚖
GN 820.6-80-M-ST	80	900	10	26	26	5.5	-	4.5	46	18	9	-	-	57	31	32.5	-	13.5	15.5	16.5	38	2	-	67
GN 820.6-80-MC-ST	80	900	10	26	26	5.5	M 5	4.5	46	18	9	16.5	3.2	57	31	32.5	45	13.5	15.5	16.5	38	2	17.6	77
GN 820.6-80-ML-ST	80	900	10	26	26	5.5	-	4.5	46	18	9	-	-	57	31	32.5	-	13.5	15.5	16.5	38	2	-	67
GN 820.6-80-MLC-ST	80	900	10	26	26	5.5	M 5	4.5	46	18	9	16.5	3.2	57	31	32.5	45	13.5	15.5	16.5	38	2	17.6	77
GN 820.6-140-M-ST	140	1300	17	44	44	8.5	-	6.6	69	26	15	-	-	96	49	52.6	-	23	26	29.5	62.5	2.5	-	217
GN 820.6-140-MC-ST	140	1300	17	44	44	8.5	M 8	6.6	69	26	15	26	2.6	96	49	52.6	68	23	26	29.5	62.5	2.5	24	80
GN 820.6-140-ML-ST	140	1300	17	44	44	8.5	-	6.6	69	26	15	-	-	96	49	52.6	-	23	26	29.5	62.5	2.5	-	217
GN 820.6-140-MLC-ST	140	1300	17	44	44	8.5	M 8	6.6	69	26	15	26	2.6	96	49	52.6	68	23	26	29.5	62.5	2.5	24	80
GN 820.6-250-M-ST	250	2400	24	64	64	10.5	-	8.7	96	34	20	-	-	131	67	72.6	-	35	37.5	38.5	89	3	-	528
GN 820.6-250-MC-ST	250	2400	24	64	64	10.5	M 10	8.7	96	34	20	35	6	131	67	72.6	77	35	37.5	38.5	89	3	21.2	583
GN 820.6-250-ML-ST	250	2400	24	64	64	10.5	-	8.7	96	34	20	-	-	131	67	72.6	-	35	37.5	38.5	89	3	-	528
GN 820.6-250-MLC-ST	250	2400	24	64	64	10.5	M 10	8.7	96	34	20	35	6	131	67	72.6	77	35	37.5	38.5	89	3	21.2	583

GN 820.6-NI

STAINLESS STEEL

Description	Size	F <sub>H</sub> in N	a ≈	b1	b2	b3	d1	d2	h1 ≈	h2	h3	h4 ≈	h5 ≈	l1 ≈	l2	l3 ≈	l4	m1	m2	m3	r	s	w ≈ Adjustable range	⚖
GN 820.6-80-M-NI	80	900	10	26	26	5.5	-	4.5	46	18	9	-	-	57	31	32.5	-	13.5	15.5	16.5	38	2	-	67
GN 820.6-80-MC-NI	80	900	10	26	26	5.5	M 5	4.5	46	18	9	16.5	3.2	57	31	32.5	45	13.5	15.5	16.5	38	2	17.6	77
GN 820.6-80-ML-NI	80	900	10	26	26	5.5	-	4.5	46	18	9	-	-	57	31	32.5	-	13.5	15.5	16.5	38	2	-	67
GN 820.6-80-MLC-NI	80	900	10	26	26	5.5	M 5	4.5	46	18	9	16.5	3.2	57	31	32.5	45	13.5	15.5	16.5	38	2	17.6	77
GN 820.6-140-M-NI	140	1300	17	44	44	8.5	-	6.6	69	26	15	-	-	96	49	52.6	-	23	26	29.5	62.5	2.5	-	217
GN 820.6-140-MC-NI	140	1300	17	44	44	8.5	M 8	6.6	69	26	15	26	2.6	96	49	52.6	68	23	26	29.5	62.5	2.5	24	80
GN 820.6-140-ML-NI	140	1300	17	44	44	8.5	-	6.6	69	26	15	-	-	96	49	52.6	-	23	26	29.5	62.5	2.5	-	217
GN 820.6-140-MLC-NI	140	1300	17	44	44	8.5	M 8	6.6	69	26	15	26	2.6	96	49	52.6	68	23	26	29.5	62.5	2.5	24	80
GN 820.6-250-M-NI	250	2400	24	64	64	10.5	-	8.7	96	34	20	-	-	131	67	72.6	-	35	37.5	38.5	89	3	-	528
GN 820.6-250-MC-NI	250	2400	24	64	64	10.5	M 10	8.7	96	34	20	35	6	131	67	72.6	77	35	37.5	38.5	89	3	21.2	583
GN 820.6-250-ML-NI	250	2400	24	64	64	10.5	-	8.7	96	34	20	-	-	131	67	72.6	-	35	37.5	38.5	89	3	-	528
GN 820.6-250-MLC-NI	250	2400	24	64	64	10.5	M 10	8.7	96	34	20	35	6	131	67	72.6	77	35	37.5	38.5	89	3	21.2	583

